

# WAUWATOSA SCHOOL DISTRICT

• Your Educational Community •

McKinley Elementary  
Community Design Meeting 4



## Tonight's Topics:

1. Site Plan Development – 15 Mins.
2. Exterior Building Design Development – 15 Mins.
3. Community Feedback

# Project Update

## What Have We Been Working On?

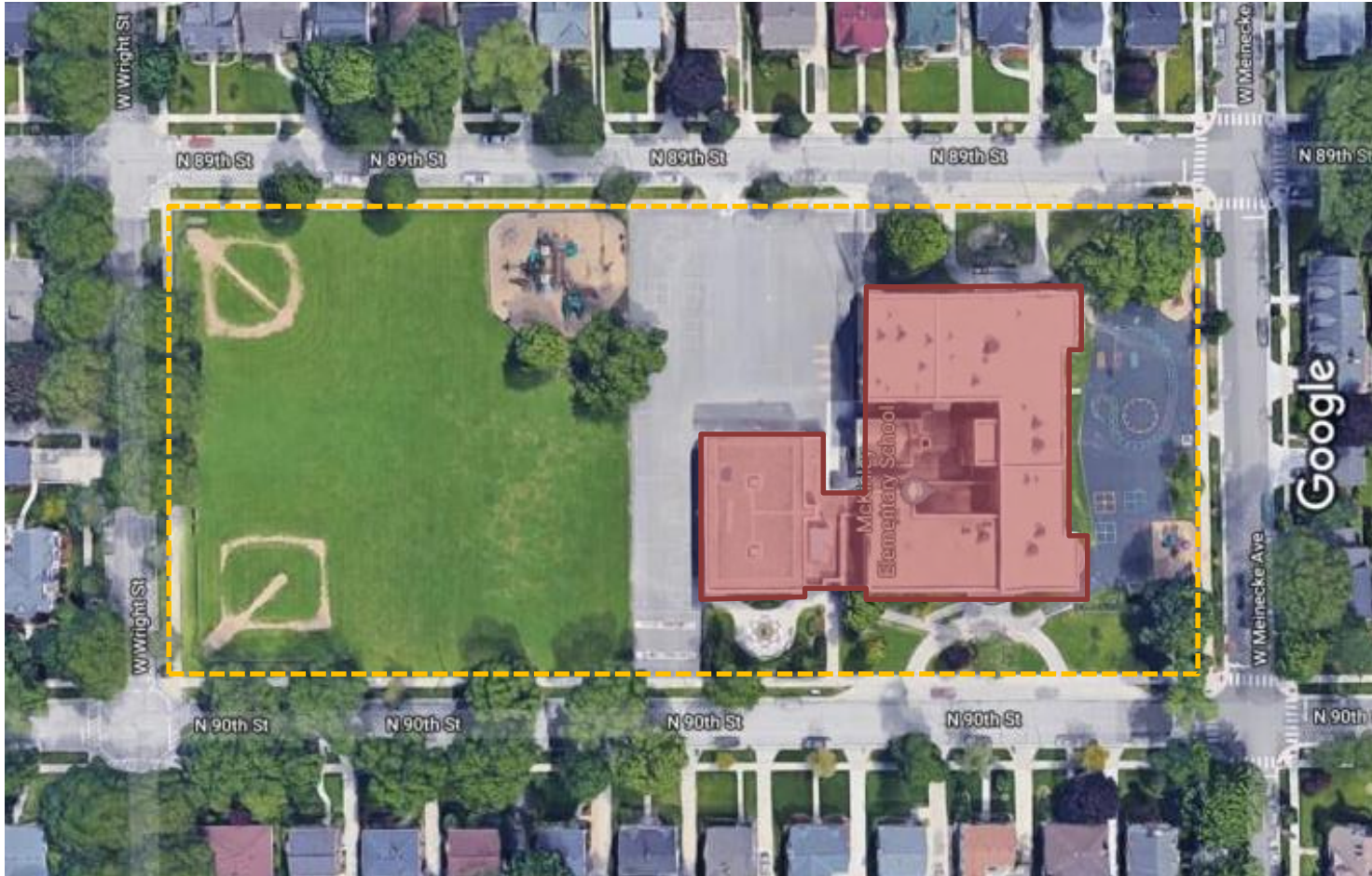
1. Schematic Design
2. Preliminary School Board Review
3. Weekly Meetings w/ District Leadership
4. Design Review Board – Preliminary Review

## What Comes Next?

1. School Board Approval of Schematic Design
2. Design Review Board Approval Process
3. City Approvals Process

# Existing Site Plan

North  
←



## Site Plan



# Site Comments/ Concerns

## Board Meeting Comments:

1. Location of Building on Site
2. Green Space
3. Play Fields, Courts, and Playground

# Comments from Design Review Board

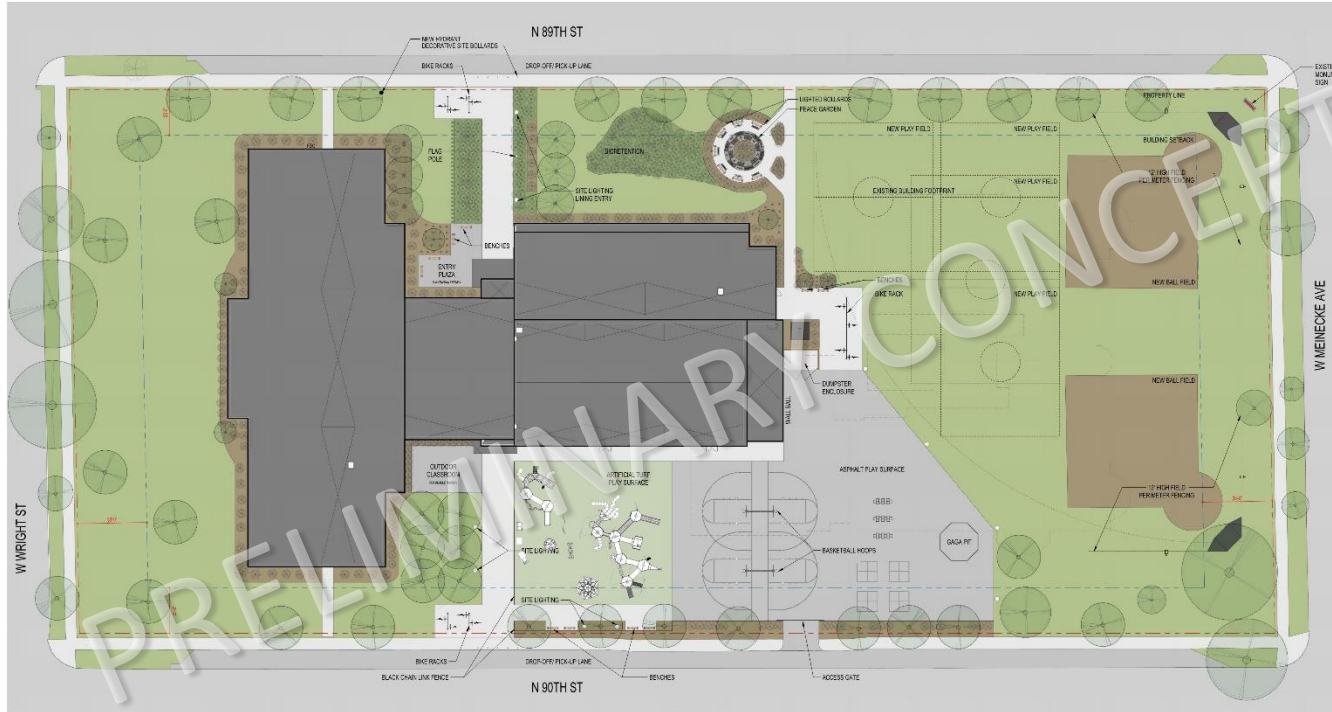
## Comments from September 5<sup>th</sup> Design Review Board Meeting:

1. Move building further north
2. Proposed materials are high quality and timeless
3. Full thickness stone is not often seen
4. The new building should be “progressive” and of its time



# Site Design

## Site Plan



North



# Floor Plan

## First Floor



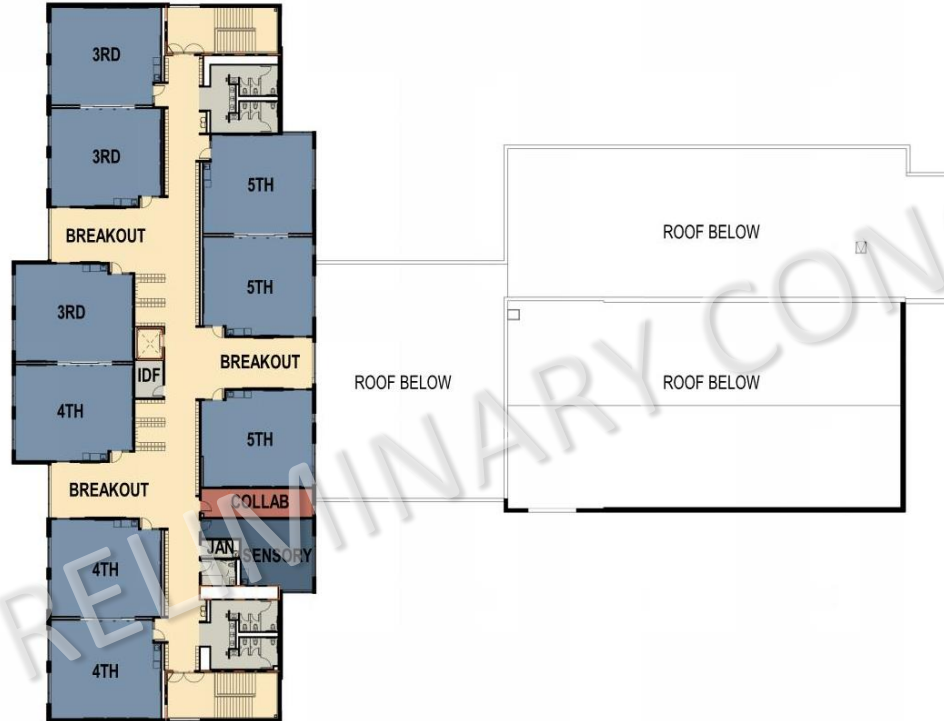
# Floor Plan

## Second Floor



# Floor Plan

## Third Floor



# Exterior Design





# Exterior Design





# Exterior Design





# Exterior Design





# Exterior Design



# Exterior Design



# Community Feedback

## Directions:

1. Form 3 – 4 teams
2. Select a spokesperson for the team
3. Two Questions:
  - What do you like about this design?
  - What concerns do you have about this design?
4. Table report out





PLUNKETT RAYSICH  
ARCHITECTS, LLP

creativity | collaboration | dedication